

Swingout Mount for Flat-Panel Displays

Model: **AM175**

Typical Screen Sizes: 42 - 70 in. Weight Capacity: 175 lb / 79.5 kg.

Features

- 1** Patented Griplates™ (US Patent number 8,035,757 B2) support the flat-panel and holds the display tight on its mounting brackets
 - 2** 10° of tilt and up to 45° of swivel
 - 3** Pull out arms extend 3.1 - 15.9 in. from the wall
- Combine with INW-AM325 in-wall box for a flush mount installation
 - Scissor-style action pulls 15.9" from the wall
 - Post-installation leveling enables fine-tune vertical adjustment after installation

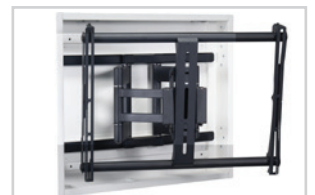
The AM175 is a swingout mount for flat-panel displays up to 175 lb./79.5 kg. It typically fits displays ranging from 42 - 70 in. or displays with a mounting pattern of 200 x 200 mm to 650 x 820 mm. The AM175 allows up to 45° of swivel, 10° of tilt and extends 3.1 to 15.9 in. from the wall. The patented Griplates™ (US Patent number 8,035,757 B2) support the flat-panel and hold the display tight on its mounting brackets.



AM175 offers flat-panel displays 10° of tilt and 45° of swivel



Patented Griplates™ hold the display tight on its mounting brackets



Combine with the INW-AM325 in-wall box for a flush installation

Swingout Mount for Flat-Panel Displays

AM175

Specifications

Weight 40.98 lb. 18.6 kg	Color Black	Mounting Pattern 200 x 200 mm (Min) x 650 x 820 mm (Max)
Width x Height x Depth 30.19 x 22.23 x 3.11-15.9 in. 767 x 565 x 79-404 mm	Total Weight Capacity 175 lb. 79.5 kg	Warranty Lifetime

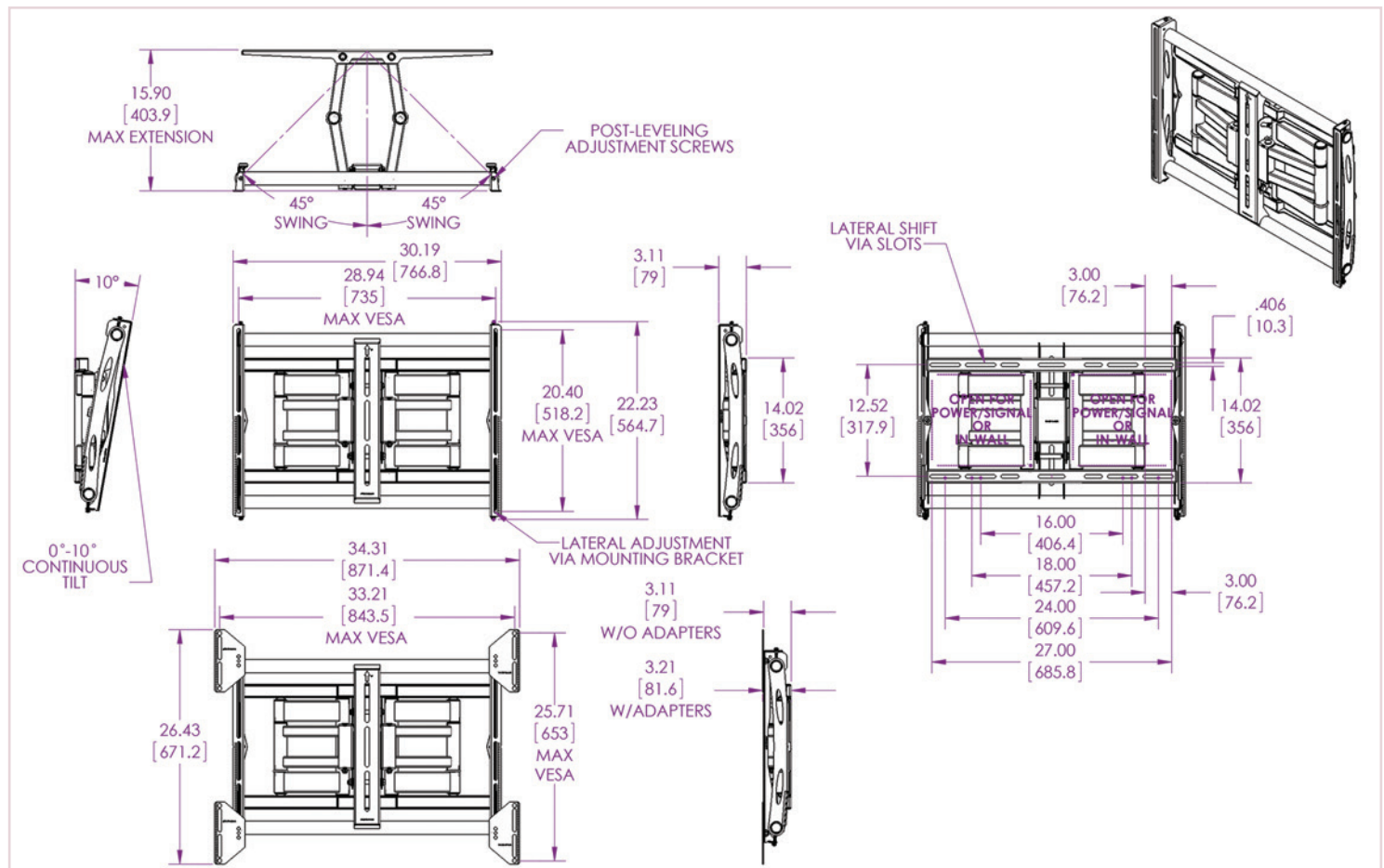
Packaging

Width x Height x Depth 33.25 x 23.75 x 5 in. 845 x 603 x 127 mm	Contents AM2 Swingout Arm (x1), Left Bracket (x1), Right Bracket (x1), Hardware Pack (x1), AM2 Extension Brackets (x2)
---	--

Accessories

 <p>In-wall box for the AM175 and AM300 INW-AM325</p>	 <p>In-Wall A/V and Power GearBox™ GB-INWAVP</p>
---	--

Architectural Drawing



Specifications subject to change without notice

T: 800.368.9700 | www.mounts.com | 1321 S. State College Blvd., Fullerton, CA 92831 USA



Visit mounts.com to see the complete line of AV solutions from Premier Mounts, including flat-panel mounts, projector mounts, carts/stands, and a full assortment of accessories.
© 2014 Premier Mounts. All rights reserved. Rev. 01-14-06

Rev. 02-15-02